



PRECIOUS WOODS

atibt

# Precious Woods

## Managing Forests To Better Protect Them



# Precious Woods in a nutshell

Creating shared value and enabling sustainable development



- ❖ 1.1 mio ha tropical forests in Brazil and Gabon
- ❖ No clearcutting– rotation of 25/35 years
- ❖ Biodiversity and ecosystem services
- ❖ Maintaining carbon sinks and a stocks

- ❖ 1,500 local employees
- ❖ Support of local communities
- ❖ Income, healthcare and education
- ❖ Cooperation with nine universities

- ❖ 100% FSC- and PEFC certified
- ❖ 4 sawmills and 1 co-generation plant
- ❖ Shareholder in 2 veneer plants
- ❖ Carbon credits

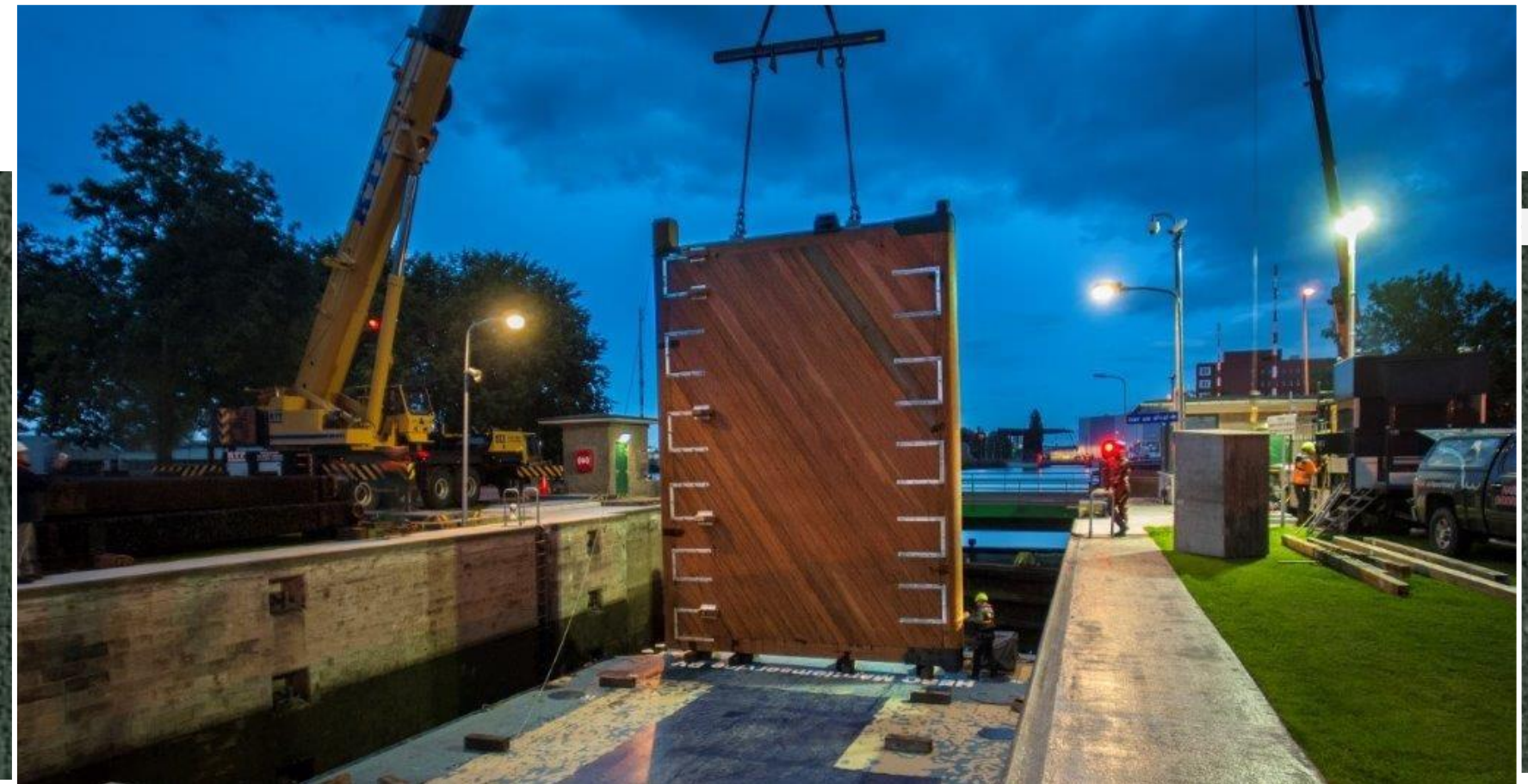


# Managing tropical forests

Forest always fulfills its function as an ecosystem

Renewable building material

Employment and social development in economically isolated regions







PRECIOUS WOODS



PEFC™

PEFC/28-31-63

Promoting Sustainable  
Forest Management

[www.pefc.org](http://www.pefc.org)



FSC

[www.fsc.org](http://www.fsc.org)

FSC® C023388

# Certified Forest Management Reducing the Impact in the Tropics



# Harvesting

## Reduced impact logging

---



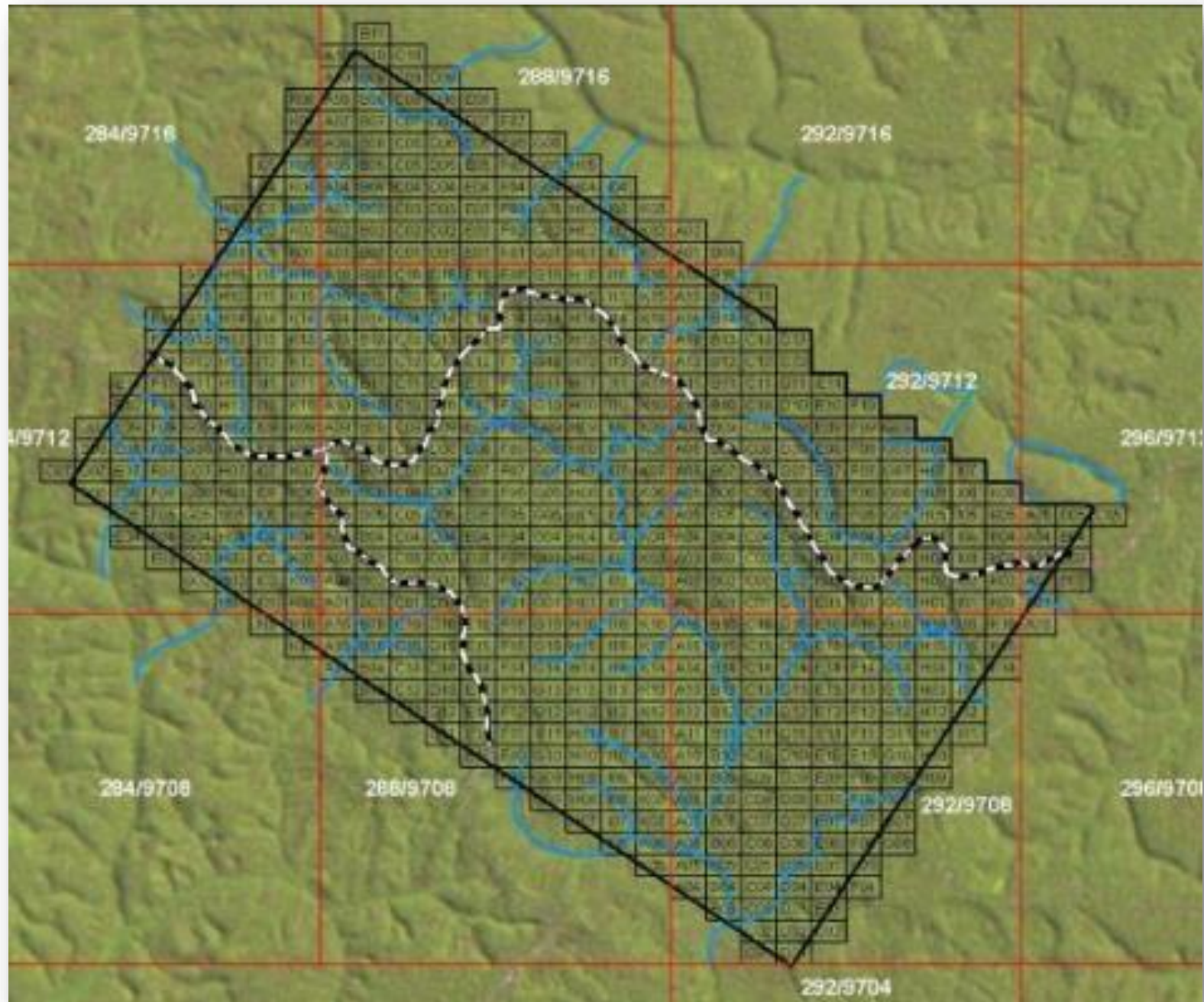
Planning is most important aspect, often neglected and expensive

---



# Inventory

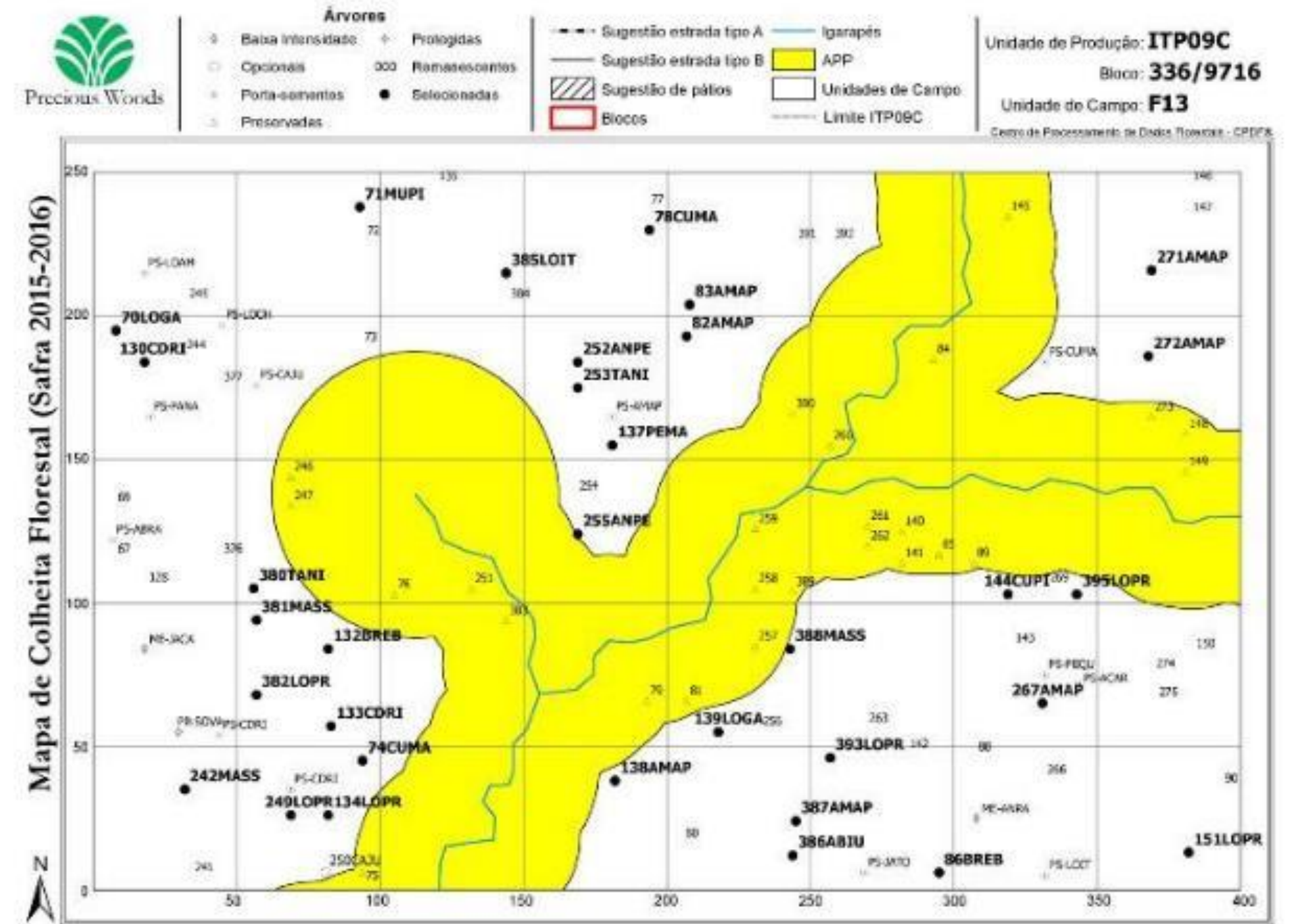
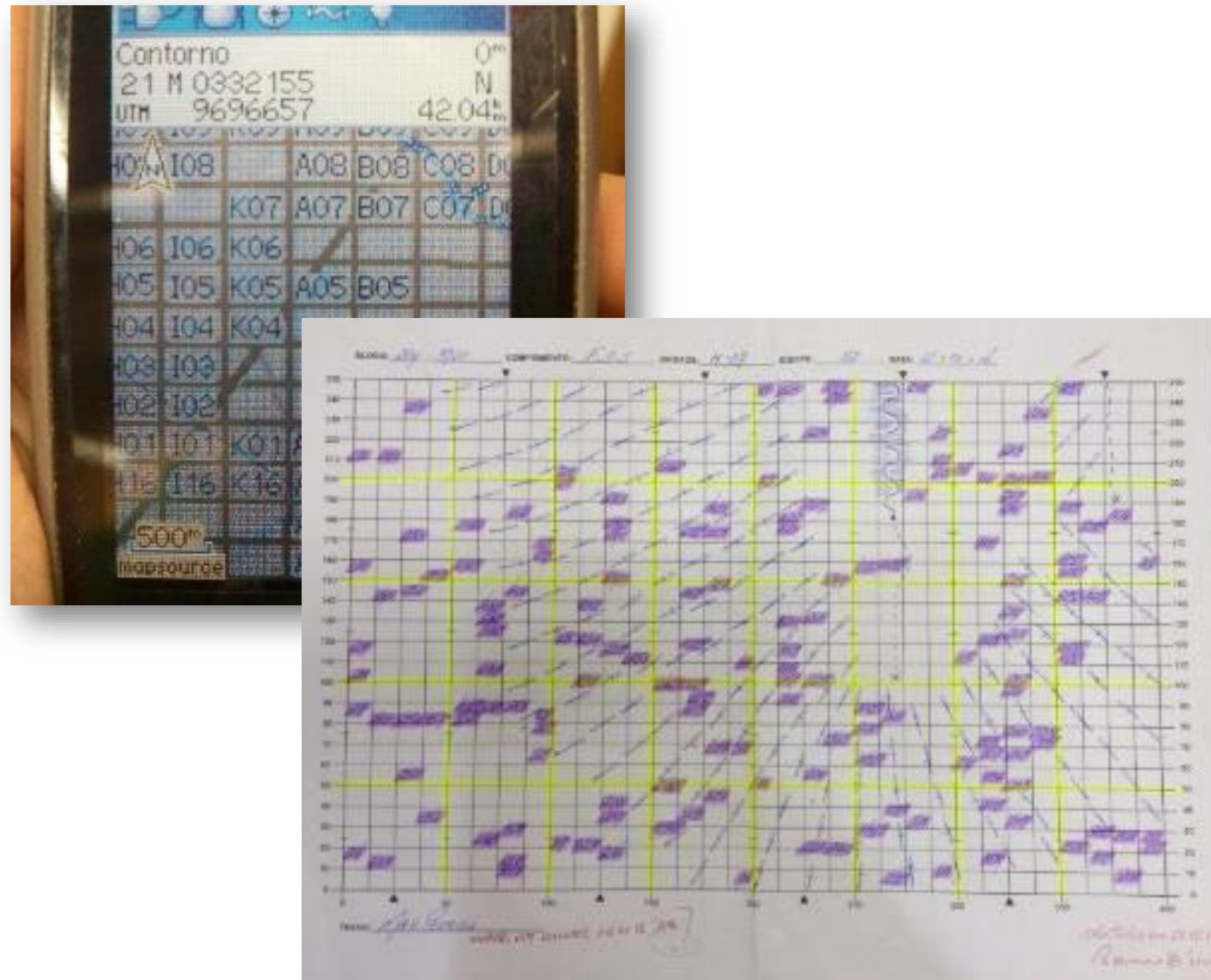
Full inventory as a basis for sustainable use





# Inventory

Full inventory as a basis for sustainable use





# Planning

---



**Road construction is the most significant impact**

---





# Sustainable Forest Management Tripple Bottom Line Approach



# Sustainability as a buzzword

Social, economic and ecological aspects must be balanced







PRECIOUS WOODS

# From Forest Management to **Nature Based Solutions**



# Example: Fauna Management







# Improving Forest Management Creating Local Added Value



# Local processing is a key factor

## Advantages of local processing

- Local added value
- Employment in remote areas
- Reduces pressure on the forest

## Problem

- Low yields
- Low level of technology
- Low know-how
- Low financial potential of operators







PRECIOUS WOODS

# Sustainable Forest Management Financing Opportunities



# How to direct indirect investment

---

## **Investments through development banks and NGOs**

Management plans and certification readiness

Loans for processing projects

Financial investment in Ecosystem Services Projects

## **Investment through educational facilities**

Training and capacity building on craftsman level

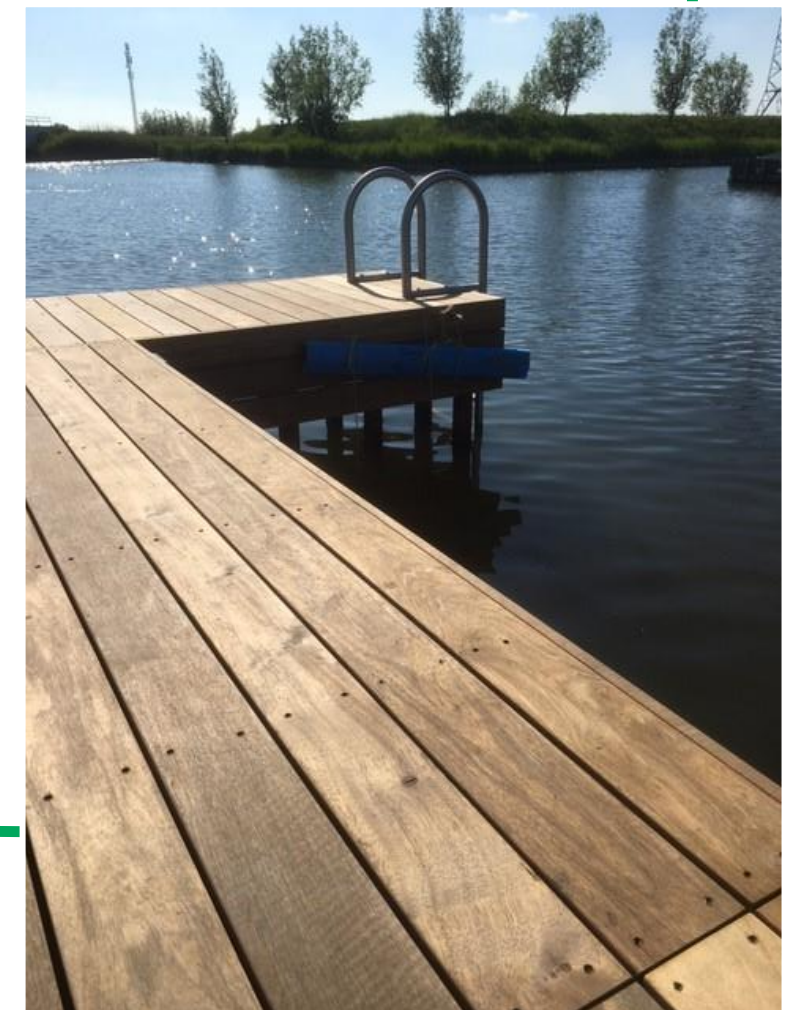
## **Investments through political cooperation**

Illegal logging and processing on a local level

Empowering local authorities

**Capitalize on the experience of forest managers**

---





# More information



📍 Precious Woods Holding Ltd

Markus Pfannkuch  
Chief Sustainability Officer  
[markus.pfannkuch@preciouswoods.com](mailto:markus.pfannkuch@preciouswoods.com)  
+41 78 662 27 27  
[www.preciouswoods.com](http://www.preciouswoods.com)

📍 ATIBT - International Tropical Timber Technical Association

Benoit Jobbe-Duval  
Managing Director  
[benoit.jobbeduval@atibt.org](mailto:benoit.jobbeduval@atibt.org)  
+33 1 43 94 72 64  
[www.atibt.org](http://www.atibt.org)





PRECIOUS WOODS

atibt

# Precious Woods

## Valuing Nature To Better Protect It